

# FAMILIES FIRST

SPECIAL 40TH ANNIVERSARY EDITION



**RAINBOW  
TRUST**

CHILDREN'S  
CHARITY



**This year, Rainbow Trust celebrates 40 years of supporting seriously ill children and their families.**

In 1986, Rainbow Trust's story began with a single act of compassion from a remarkable woman, Bernadette Cleary. For four decades since, Rainbow Trust has continued to support families at a time when they need it most.

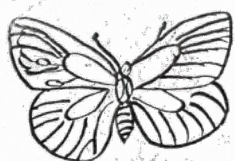
This would not have been possible without the generosity, commitment and

kindness of supporters like you. Your support enables Family Support Workers to help seriously ill children and their families, ensuring they do not have to cope alone.

In this special edition of Families First, we look back across the decades, sharing stories from families, supporters, staff and volunteers who helped shape Rainbow Trust.



**Cover photo:** Maya and Ezri are supported by Family Support Worker Wendy. You can read more about their story on pages 14 and 15.



Extract from  
Rainbow  
Trust's very  
first newsletter,  
written in 1987

Dear Supporter,

I trust you are well & happy. I'm pleased to be able to take this opportunity to update you on the progress of Rainbow Trust.

As you probably know we acquired Charity status in Sept. '86. Since then various fund raising events have been organised by many different people. One lady made marionades to sell to friends whilst another organised a Rainbow bazaar. Not only do they bring us much needed funds but many new friends.

On December 1st '87 we opened an office near Trafalgar Sq., it is part of the office suite of one of our trustees & it is from here that the wheels of Rainbow Trust now turn.

At the moment we are busy looking for a suitable property for Rainbow House. We are also looking for staff.

1988 is the year for us to fulfill the plans... & to build on our strong foundations.

I would like to ask you to tell your friends about Rainbow Trust & to encourage them to support our work.

I think this just about rounds up all the news.

It just leaves me to say a very heartfelt thank you to you all for bringing us this far.

Laughter, love & light  
Bernadette.





Bernadette fundraising at an event in the 90s



Bernadette and her husband Dennis



Bernadette receiving her OBE in 2006

# Where it began: Rachel's story

**In the autumn of 1981, a neighbour knocked on the door and asked Bernadette if she could help a 12-year-old girl who had come home to die.**

Rachel had been diagnosed with cancer when she was six, had been successfully treated and then, when she was 12 years old, the cancer returned.

When Bernadette first visited Rachel and her mum Maureen, they were in a terrible state. Rachel had checked out of the hospital, against her doctors' wishes, to die at home surrounded by her family. Her local GP refused to treat her, she had no pain relief drugs and she was in excruciating pain.

Bernadette recalled: *"Rachel was adamant that she wanted to go home and so her mother discharged her. That same afternoon I visited Rachel for the first time. It was to be the beginning of a most beautiful friendship."*

Bernadette was there to help and support Rachel and Maureen, comforting both during the final weeks and consoling Maureen when Rachel died.

Word spread of Bernadette's kindness and within months she had more requests for help than she could cover on her own.

Bernadette set up Rainbow Trust in 1986, working firstly around her kitchen table and then from a shed at the bottom of her garden. She and her husband Dennis personally funded all of her travel and visits to families with a seriously ill child while friends pitched in and supported her, trying to help as many families as she could. To help with the requests they trained Family Support Workers to provide the same care and compassion she had given to Rachel.

Dennis remembers: *"Every night after dinner we would sit around the kitchen table and discuss how to move on. What structure did we need, what documentation, what procedures to put in place, how to support staff and, of course, how did we intend to fund the whole project."*

**“Bernadette would never give up where children are concerned. There are no words to convey what she has done to help children and families face the trauma in their lives.”**

Dennis



Bernadette's vision was to make the movement bigger, to be able to reach more seriously ill children and their families.

In 40 years, our name and our vision have stayed the same. We believe that every family who has a child with a life threatening illness should receive the support they need.



Scan to donate or go to [rainbowtrust.org.uk/donate](https://rainbowtrust.org.uk/donate)



## Zoe's family, supported in 1990

**Being pregnant, with three other children and a seriously ill child, Rainbow Trust gave us each the support, love and care we needed.**

Zoe's family was supported by Rainbow Trust in 1990. After spending time at Rainbow House, Zoe's mum, Aileen, and Aileen's husband, Colin, wrote this letter to the staff.



*Zoe in hospital with Colin and her sister, Emma*



*Zoe with her brothers and sister*

10 April 1990

Rainbow Trust is the out-stretched hand that you want to grab hold of.

If only I had known about them two years ago when my then 10-year-old daughter was first diagnosed as having a brain tumour. The weeks in hospital followed by eight weeks of radiotherapy, with two older children, a baby of five months and the knowledge that another baby was on the way.

Zoe was fit and well for nearly two years after her tumour was successfully treated, then out of the blue it returned. We were told she had four to eight weeks to live. She lived for seven.

We nursed Zoe at home with tremendous help from our doctor and the nurses, but there was never any time on our own. The doorbell was always ringing, the phone going non-stop, meals to prepare and two very lively little boys to keep happy.

We agreed that we would like to go to Rainbow House in Surrey.

The moment we walked in it felt as though a weight had been lifted. We spent ten wonderful days there. Zoe was in bed a lot of the time, but we had time to be a family. It was just like being at home, one big happy family, but we didn't have to worry about cooking meals, washing or answering the door. The boys always had someone to look after them but Mum and Dad were there if a cuddle was needed.

When we came home the Family Support Workers came in every day, they looked after the boys, sat with Zoe, helped with the household chores or just talked if that was what we wanted.

Zoe passed away a week after our return from Rainbow House. On the day of the funeral two Family Support Workers came early to collect the boys and looked after them at the service.

If you needed to talk, someone was always there, if you wanted to be quiet and alone, you could be. Whatever your views are, they are respected. Support, love and care is given in abundance. We all left a little bit of our hearts at Rainbow House, and also a tremendous amount of our love.

Our love to you all, always.  
Aileen and Colin



*In loving memory of Zoe*

Aileen now has seven grandchildren who are all doing well and she regularly visits the Netherlands where her son lives. Colin is in the process of downsizing his business, ready for retirement. The family kindly fundraised for Rainbow Trust by cycling 300 miles from Land's End to Leatherhead, Surrey, and completing a golf marathon.

36 years later Aileen said:

*"Staying at Rainbow House was the most amazing time. When you are caring for a seriously ill child you never have those moments to yourself, it is 24/7. Time is precious. It was a place that enabled us to go somewhere to be taken care of. It was a golden nugget. Everyone needed something different and everyone got exactly what they needed."*

*"Even though my children were tiny, they took on everything. With what was going on around them, the support was a positive thing. It helped everyone in the family deal with Zoe's death. It has had a ripple effect and a massive impact on how we deal with the process of death. Rainbow Trust was a charity that could help where it was really, really needed."*

Grief and bereavement are incredibly difficult to navigate and cope with. It is only thanks to your kindness and donations that we can give families support for as long as they need it.

## Jo, a sibling supported in the early 1990s

**When Jo was eight, her sister, aged 13, was diagnosed with cancer. It was an extremely challenging time for the whole family and had a big impact on Jo.**

Family Support Workers Tina and Moira supported the family, offering sibling support for Jo and her brother. These moments were very special to Jo and helped her to understand what was going on with her sister.

Jo said: *"I completely understand, first hand, how Rainbow Trust's support can shine a light in the dark, how when everything seems like it has changed forever, you can get through it with a little help."*

Tina and Moira did lots of arts and crafts with Jo and her brother and took them on days out. They also brought round a Mr Men book for Jo and her brother to colour in which explained about her sister's illness and why their mum had to spend a lot of time at the hospital.

Jo and her family also stayed at Rainbow House. Jo reminisced about how going there felt like going on holiday, to a home away from home.

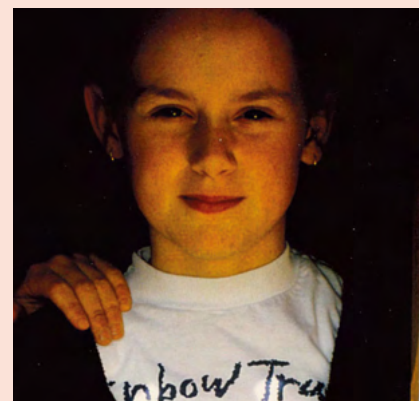
She remembers creating a racing circuit in the garden to ride her bike around, going fishing in a big Volvo, waking up to the smell of toast, her mum chatting to the Family Support Workers, playing games in the evening with her family, and spending a long time in the playroom on the rocking horse, which today sits in Rainbow Trust's Head Office.

*"We felt important at Rainbow House. That place was our sanctuary. We had time with mum, we could all just stop."*

Jo is now married with two children, is working part time for a borough council, is studying to become a Therapeutic Counsellor and still loves being creative through dress making and crafts.



*Jo skipping with Family Support Workers*



*Jo at Rainbow House*

Rainbow Trust opened two respite homes, Rainbow House and Rainbow Fernstone, in the 1990s where seriously ill children and their families could stay. The houses were also the base for Family Support Workers that helped families in their own homes.

The houses closed in 2009 to allow for more families to be supported in their own homes and in the community.



Scan to donate to support more families, like Zoe and Jo's, or go to [rainbowtrust.org.uk/donate](https://rainbowtrust.org.uk/donate)



## Anna's family, supported in 1992

### Dealing with a life-threatening illness and achieving childhood dreams

In 1989, four-year-old Anna became unwell and was diagnosed with a brain tumour. Anna sadly died in 2021, aged 37, due to complications resulting from her childhood illness.

Anna's family was supported by Rainbow Trust in 1992. While they were being supported Thomas, Anna's brother, shared his experience of visiting Rainbow House in Rainbow Trust's newsletter of that year.

" My name is Thomas. I am nine years old and have a sister, Anna, who is seven years old. I have stayed at Rainbow House four times. I wanted to stay there because I thought it would be exciting and it was.

When I arrived we looked around the lounge and I liked the playroom. On the second day Daddy and I played football with Family Support Worker Simon. My favourite room is the playroom where there is an electronic keyboard. I'm not very good at playing it but I like to press all the buttons. There was a computer in the children's ward which I played on.

Pasta is my favourite food and they give it to me at Rainbow House sometimes. Rainbow House is near lots of good places that we can visit and Rainbow House people come with us. The garden is very big and I can go high on the swing by myself. At the farm I bottle fed a lamb that was four days old. Anna also fed it. The lambs followed us about and one of them stood on my foot.

We came to Rainbow House because Anna was very ill and we needed to rest. We don't have to pay. On Mummy's birthday Anna got very sick and had to go to hospital. I was asleep so Daddy woke me up to tell me.



When I was about seven the doctor said Anna had to go to hospital and she had an operation. I went to visit her and her face looked different.

When Anna came home she had a limp. She had to have more operations and now she has a wheelchair. I sometimes push her and I like to do that.

My Daddy works at Gatwick airport and Mummy used to work but she does not now because she looks after Anna. Mummy and Daddy were very worried. At one time our bunny rabbits Stardust and Snowy had to be looked after by someone else. They were very excited when we got them back.

I like the people at Rainbow House because they are friendly. We are all happy when we are there – even Mummy and Daddy. It is a charity that helps Mummies and Daddies who have a very sick child.

When I grow up I want to be a pilot. I hope there is a picture of me in the newsletter." ■

Thomas, aged nine

34 years since they received support, Anna and Thomas' mum, Margaret, shared that Thomas, now 43, is doing well, still loves pasta and is a captain with easyJet, making his childhood dream come true.

Margaret also recalled the difference Rainbow Trust's support made to her at such a hard time.

*"After finding out Anna's diagnosis, it was disbelief initially. I had to give up work, I had to give all that up.*

*"We were offered to go and stay at Rainbow House, which was lovely because it meant we did not have any chores to do. We got quality time without having to worry about cooking and cleaning. They also organised special days out which Thomas and Anna both enjoyed very much.*

*"It was lovely for Thomas, we could give him time and there were activities he could do at Rainbow House. It is very difficult when you are caring for a sick child and you have another child who you can't give as much attention to as you feel they deserve.*

*"When Anna was able to go home from hospital, Family Support Worker David used to come and help us at home with jobs around the house.*

*"One time we were at Rainbow House, Anna went into an epileptic seizure and she had to be rushed up to hospital. Thomas stayed at Rainbow House and was taken to and from school by the Family Support Workers. The support meant that my husband, Jeremy, could keep working and I could focus on Anna."*



*Thomas gardening with Family Support Worker Arthur*



*Thomas and Anna with Family Support Worker Irene*



*Thomas now in his captain uniform*

For Margaret, the support she and her family received at Rainbow House and at home gave them time to spend together as a family and the relief of knowing

that Thomas was supported and getting to school okay. It was respite for her and a chance to talk to someone about everything she was juggling.

# From the frontline: the impact of your support



10 families supported by the North East Care team visited the circus. Pictured is Family Support Worker Emma with Delilah, four, who has a rare condition, and Ivy-Rae, five, whose brother is seriously ill.



After school, Family Support Worker Julie took Maleeha and Aleena to a park in Manchester and then for a babychino. Their brother, Rakeem, is two and has a genetic neurological disorder.



Max, 10, who has a rare neurological condition, and his sister Freya, three, visited their local hospice near Bristol to watch Santa arrive by helicopter. Family Support Worker Wendy accompanied the family to support them and help make the day special.



Eight siblings of seriously ill children visited the aquarium, hosted by the Merseyside and Cheshire Care team. They watched the shark show, saw lots of fish and walked through a shark tunnel. Pictured are Oliver and Theo, aged four, whose sister has leukaemia.



Robyn, three, has short bowel syndrome. Following a hospital visit in Southampton, Family Support Worker Michelle drove Robyn's sisters home to paint and play, giving their mum time to focus on Robyn's appointment.



On the anniversary of Ellis' treatment starting for a rare condition of the white blood cells, his mum, Rachel, was feeling emotional so Family Support Worker Gina took the family out to a cafe in Stockport. Ellis, aged two, is thriving following the end of his treatment.



Family Support Worker Laura took Liv, three, to the soft play and the park, giving her parents respite. Liv's sister Evie, five, has a neurological condition.

# Marlene, retired Family Support Worker

Marlene joined Rainbow Trust as a Family Support Worker in 2002. After 21 years at Rainbow Trust, she retired in 2023.



Marlene supporting a seriously ill child in hospital



Marlene volunteering at the Manchester Marathon



Marlene after abseiling down Liverpool Cathedral to raise money

“ I started in the Cumbria-based team (now the Kentown Support team) with just one other Family Support Worker and our Manager. Immediately, my favourite word to hear when I visited families became ‘remission’. At the time, all our visit notes had to be written up by hand and it was several years before we were given email addresses.

Rainbow Trust’s support was very important in Cumbria for the families living rurally as support was at a bare minimum. Caring for a sick child can be very isolating for the parents and siblings. The transport we provided was a great help for these families as some of them had to travel to Newcastle, Manchester or Liverpool for treatment, often more than a 200-mile round trip.

I will never forget the first family I visited and knocking on the door. I was nervous as I really wanted to do my best.

It was important to me to ensure that families knew that when they started receiving support, I would be there for as long as they needed me.

Every day being a Family Support Worker was a different story. The children I supported were amazing, so entertaining, amusing and curious about the world around them.

I loved working for Rainbow Trust, I was very proud of what Rainbow Trust stood for and I felt privileged to be welcomed into the lives of these families at such a daunting time. I hope I made their journey easier by going through it alongside them.

I would like to hope that Rainbow Trust will continue to grow and be able to reach out to more families that are in need over the next 40 years. ”

“ Every day being a Family Support Worker was a different story. The children I supported were amazing, so entertaining, amusing and curious about the world around them. ”



A Family Support Worker is a lifeline, a connection to normality, someone who is there to help families cope with whatever they need, whether it be a person who understands them and knows what they are going through, a translator for medical terms, a companion to difficult hospital appointments, an entertainer of healthy brothers and sisters to give time to the parents to look after their seriously ill child.



Sponsor a Family Support Worker like Marlene today  
[rainbowtrust.org.uk/sponsor-us](https://rainbowtrust.org.uk/sponsor-us)



# Thank you to all our amazing fundraisers and supporters



Staff from **Invesco** took on a triathlon from Henley-on-Thames to central London. They rowed, cycled and walked for 95km, raising £12,800.



Since 2013, students from **Reeds School** in Surrey have supported Rainbow Trust, taking part in many fundraising activities, from running marathons and 10Ks to volunteering at a number of seasonal events.



**Little Dancers**, a children's dance studio in Bath, held an end of year charity show, raising £1,500 for Rainbow Trust.



**Hayley and Ian from The Crown pub** in Northamptonshire cycled 130 miles over two days, starting at The Crown and finishing in Brighton, raising £3,112.

## Thousands of miles of support



2026 marks **Diana's** 15th London Marathon for Rainbow Trust. She has raised £37,000 in her rainbow tutu and this year will run with her daughter and granddaughter.



For two decades, **Liz** has remained dedicated and run the Great North Run. Along the way she has raised £15,000 and counting as she prepares for 2026's event.



From numerous marathons over the years, **Judith** has raised over £15,000 for Rainbow Trust. Her next challenge is the SuperHalves Marathon series, taking place in six European cities.



### Stay in touch

Call us: 01372 363438

Email us: [supportercare@rainbowtrust.org.uk](mailto:supportercare@rainbowtrust.org.uk)

Visit us: [rainbowtrust.org.uk](http://rainbowtrust.org.uk)

You can check our Privacy Policy at [rainbowtrust.org.uk/privacy-policy](http://rainbowtrust.org.uk/privacy-policy)



### Head Office address:

Cassini Court, Randalls Way, Leatherhead, Surrey, KT22 7TW

Registered Charity No. 1070532.

## Bob, long-standing volunteer

**Bob is one of Rainbow Trust's longest-standing fundraising volunteers. He began fundraising in 1986 and now runs two fundraising events every year.**

“ I worked at Legal & General for 40 years and in that time I met Dennis, the husband of Rainbow Trust's founder, Bernadette.

From 1986 onwards, when Bernadette started the charity, I did some fundraising, such as raffles and quizzes, I dressed up as Father Christmas at a garden centre near Dorking and helped out with bucket collections at shopping centres.

I said to my wife, 'when I retire I want to do some charity work'. And Rainbow Trust was the obvious charity. I have a real soft spot for children's charities.

I started Rainbow Trust's annual Race Night about 30 years ago. Then in 2009, Dennis asked if I would take over running Rainbow Trust's annual fundraising golf day. I said 'of course I will'. They are both still ongoing to this day, it has become quite a big thing really. People keep coming back, it is fantastic.

I really care about doing the events, I get a big buzz from it. I am a people person and enjoy meeting everyone who comes along. One big memory of mine was starting 'Bob's shot of the day' at the golf day many years ago. There have been some funny stories on the golf course, good memories.



*Bob meeting HRH Sophie, Duchess of Edinburgh, in 2006*

The children Rainbow Trust supports inspire me. I say to everyone who attends the events, 'you are part of this, without you we would not be able to do it' because we would not.

I remember visiting Rainbow House and seeing what they do. It is not only support for the child that is ill, but also for the family, and that still happens now. Rainbow Trust looks after them in every way.

I cannot tell you how much I have enjoyed working as a volunteer and a fundraiser. I am 74 now and I want to continue as long as people keep coming to the events. I have worked with the most lovely people at Rainbow Trust, I have thoroughly enjoyed everything.”

“ *The children Rainbow Trust supports inspire me. I say to everyone who attends the events, 'you are part of this, without you we would not be able to do it' because we would not.* ”



*Bob hosting a recent Race Night*



*Bob presenting a cheque to Rainbow Trust*



Volunteers, like Bob, have been an integral part of Rainbow Trust for the last 40 years. From organising fundraisers, to driving families to essential hospital appointments, to cheering at events, volunteers are a huge part of everything we do.

If you are interested in joining our friendly volunteer team and helping to make a difference to seriously ill children and their families, get in touch today: [rainbowtrust.org.uk/volunteer](http://rainbowtrust.org.uk/volunteer)

# Events calendar

Help us mark this special milestone by getting involved. From marathons and skydives to community fundraisers or sponsored challenges at your workplace, there are so many ways to take part.



## Adventure Triple Challenge

9 May 2026

A team challenge of cycling, canoeing and trekking in the Lake District.



## 40 miles in 40 days

Anytime, anywhere

Celebrate 40 years of care by taking on 40 miles over 40 days, your way. Walk, run, cycle or swim.



## CarFest, Silverstone Circuit

28-30 August 2026

The UK's largest family fundraising festival with amazing music and activities.



## Junior and Mini Great North Run

12 September 2026

The biggest children's running event in Britain for three to 16 year olds.



## Great North Run

13 September 2026

A memorable race day with incredible atmosphere.



## Vitality London 10k

27 September 2026

London's iconic 10K route, guiding you past famous landmarks.



## Great North Swim

12-14 June 2026

The UK's biggest open water swimming event, held at Lake Windermere.



## Join team Rainbow Trust

Show your support and join us, or create your own event or challenge in your community or at work. You could even create your own 40 themed challenge, to help us celebrate 40 years.

However you choose to fundraise, we would love for you to celebrate this anniversary with us. Sign up today at [rainbowtrust.org.uk/fundraise](https://rainbowtrust.org.uk/fundraise)

## Adam and Kate, parents supported in 2008

**Rainbow Trust gave us the most precious thing possible – time with our daughter.**

**In 2008, Adam and Kate's daughter, Iris, became ill at seven months old with a rare tumour on her liver. Family Support Workers Mary and Mandy supported the family throughout. Adam and Kate recall the support they received.**

“ Mary was always there to pick us up, drive us to the hospital in London and take us home again at the end of a very long day. I really don't know how we would have coped without this.

We could trust Mary and Mandy with all our fears and concerns. When we were not at hospital, Mary and Mandy would come and visit us at home. They spent the time playing with Iris, which gave us time to ourselves. That time was precious. It gave us the breathing space to regain a sense of normality, before the next round of treatment began.

In 2010, when we were told our little girl was going to die and there was nothing that could be done, Mary and Mandy were astonishing in their care, compassion and hard work.

With their help, we gave Iris a good death, peacefully at home.

Having reflected on the support that Rainbow Trust gave us, the important part they played in our lives was to give us time. We had more time to enjoy our daughter as we did not have to sweat the small stuff and that had a positive impact on our mental health. They gave us time to focus on what mattered.

The support that we had from Rainbow Trust went beyond the practical. Mary and Mandy were with us until, and beyond, the end, and for that humanity and care we are forever grateful.

The exposure to such kind people and that level of support made me determined to be the best and most kind person I can be in society, to pass it on.

We will always miss Iris, she is forever in our thoughts.

Mary and Mandy's support was an integral part of our lives. They were two very kind and compassionate people who cared deeply. ”

“ *They were with us until, and beyond the end. We are forever grateful.* ”



*Kate and Iris on holiday*



*Remembering Iris*



*Kate and Adam with Iris*



Maya in hospital



Maya and Ezri crafting on call with Wendy

## Katie, mum currently being supported

**Katie, mum to twins Ezri and Maya, shares the impact Family Support Worker Wendy's support has made to her over the past six years.**

“ At my 20 week scan, doctors told me that one of my twins had a problem with her heart. She had hypoplastic left heart syndrome and was to have a number of open heart surgeries within the first five years of her life.

When my babies, Ezri and Maya, were born, Maya was taken straight from me, I didn't get to hold or see her. She had her first open heart surgery when she was only 10 days old.

A time that should have been filled with excitement and new baby joy was replaced with regular hospital appointments and knowing that the only thing keeping my child alive was a fragile piece of gauze in her heart.

Having to balance healthy twins is a challenge on its own but with Maya so sick I felt lost and I only survived on adrenaline.

During those first few years of her life, Maya was extremely clinically vulnerable.

We could not do anything that would involve her picking up germs; no playgroups or weekly shopping. It was isolating for us all. I lost touch with friends and felt as if I was a burden to my family.

In October 2019, Family Support Worker Wendy started supporting us. The support is invaluable. No judgement, no pressure.

When Covid began we had to shield and isolate. Wendy was an anchor to me and was around throughout the pandemic dropping off craft boxes, weekly shopping, and medications from the pharmacy.

She video-called Maya and Ezri twice a week to read them stories and sing nursery rhymes. It gave me somebody to talk to and somebody else for the girls to interact with.

“ **A time that should have been filled with excitement and new baby joy was replaced with regular hospital appointments and knowing that the only thing keeping my child alive was a fragile piece of gauze in her heart.** ”



A craft and play box dropped off by Wendy

Maya had to have an essential operation and I could not find childcare for Ezri. If Wendy had not been able to look after Ezri for a few hours, Maya's operation would have had to be cancelled.

When the restrictions from lockdown were lifted, Wendy helped me to take the girls for walks and get new shoes.

In 2022, Maya went into hospital for her fourth open heart surgery. We were there for 59 days.

Wendy gave me the opportunity to take some time out for myself, helped with the school run for Ezri and gave Maya a chance to have some fun. Wendy supported Ezri with her emotional needs, helping her to understand why her sister was not at home.

Being a single mum I am constantly on the go, every day. When Wendy is here I can sit down, knowing that the girls are safe, happy and having some much-needed fun.



Maya and Ezri enjoying heart crafts

Wendy is there for me, listening to my concerns about Ezri's future, and helping me find solutions.

Wendy has supported with additional hospital visits, transport for regular blood tests and taking Ezri out to entertain her whilst we attend appointments.

**“ Wendy makes us smile, which is something very precious. ”**

Wendy takes Ezri out to places she otherwise would not be able to go. As my attention is always on Maya, it is heartwarming to see Ezri having the attention she deserves.

Maya must carry an emergency injection and I cannot leave Maya with anyone untrained in administering the injection. Wendy completed the training and Maya is so excited at the prospect of being able to experience the same things as Ezri. Previously, Maya could see in Ezri all the things she could not do.

Without Wendy's support, I would feel isolated and Maya and Ezri would not have had the opportunities, attention and experiences they deserved.

What makes Wendy and Rainbow Trust shine for me is that the support is not just tangible. Without the calls and somebody to talk to during the isolation and hard days, it would have been extremely detrimental to my mental health, and that would have impacted hugely on Ezri and Maya too. Wendy makes us smile, which is something very precious.

Rainbow Trust have truly been the lifeline that we as a family have all needed. ”

Hypoplastic left heart syndrome is a rare form of congenital heart disease that causes the left side of the heart to not develop properly and be too small.

Around 250 babies are diagnosed with hypoplastic left heart syndrome in the UK every year.



### Sponsor a Family Support Worker like Wendy today

Rainbow Trust supports families for as long as they need it with whatever they may need. A Family Support Worker could be a lifeline of support for a parent who feels desperately alone, a sibling who is struggling to understand why their normal has changed, and a seriously ill child who just wants to play.

By sponsoring a Family Support Worker like Wendy today, you will be helping to ensure that more families can receive this vital lifeline, ensuring they do not have to cope alone.



### Sponsor a Family Support Worker like Wendy today

[rainbowtrust.org.uk/sponsor-us](https://rainbowtrust.org.uk/sponsor-us)



# Celebrating 40 years of care



**YES! I would like to help life-threatened children and their families today**

Title \_\_\_\_\_ Name \_\_\_\_\_ Surname \_\_\_\_\_  
 Address \_\_\_\_\_ Postcode \_\_\_\_\_

I would like to receive emails:

£15  £25 Other:

I enclose my cheque made payable to Rainbow Trust Children's Charity or

Please charge my:  Visa  MasterCard  Maestro  Amex

Name on card:

Card No:

Security Code:  Issue No:  Start Date:  /  /

Please call me on: \_\_\_\_\_

Please send your donation to:  
 Rainbow Trust Children's Charity, Cassini Court,  
 Randalls Way, Leatherhead, Surrey KT22 7TW  
**T:** 01372 220083 **E:** supportercare@rainbowtrust.org.uk  
[rainbowtrust.org.uk/donate](http://rainbowtrust.org.uk/donate)



giftaid it

Please tick, sign and date here to boost your donation by 25p of Gift Aid for every £1 you donate, at no cost to you.

Sign: \_\_\_\_\_ Date: \_\_\_\_ / \_\_\_\_ / \_\_\_\_

I want to Gift Aid this donation and any donations I make in the future or have made in the past four years to Rainbow Trust Children's Charity. I am a UK taxpayer and understand that if I pay less Income Tax and/or Capital Gains Tax than the amount of Gift Aid claimed on all of my donations in that tax year it is my responsibility to pay any difference.

Friends and supporters of Rainbow Trust like to receive information and appeals from us. **Your support is vital**, and we really want to stay in touch but please tick this box  if you *don't* want to receive this information by post.