

HAND BUNNY

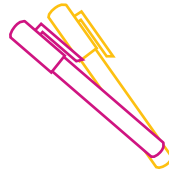
You will need:



Colour paper



Scissors



Pens

Create a bashful bunny - just in time for an Easter card, or decoration.

1. Draw round your hand onto a colourful piece of paper or card.
2. Carefully cut out around the line.
3. Fold in the thumb and little finger - these will be the arms.
4. Cut straight across at the base of the middle finger on the paper hand (so that the bunny only has 2 ears!)
5. Decorate with eyes, nose and ears. Move the arms to hide and reveal the bunny face.

