

# CHRISTMAS WREATH

**RAINBOW  
TRUST**

SUPPORTING FAMILIES  
WITH A SERIOUSLY ILL CHILD

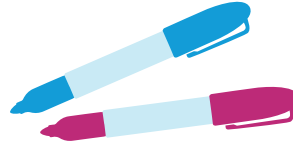
You will need:



Green paper



Scissors



Pens



Glue stick

## Create your own unique family wreath this Christmas

1. Draw round your hands onto green paper, get the whole family involved for different sizes.
2. Cut out the hand shapes.
3. Arrange the hands into a circle.
4. Make a circle from paper in a contrasting colour, as well as some holly leaves.
5. Glue the hands onto the back of the circle - fingers sticking out so that they look like leaves on a wreath.
6. Add a message, and decorate with pens/glitter/pom poms and hang indoors.

